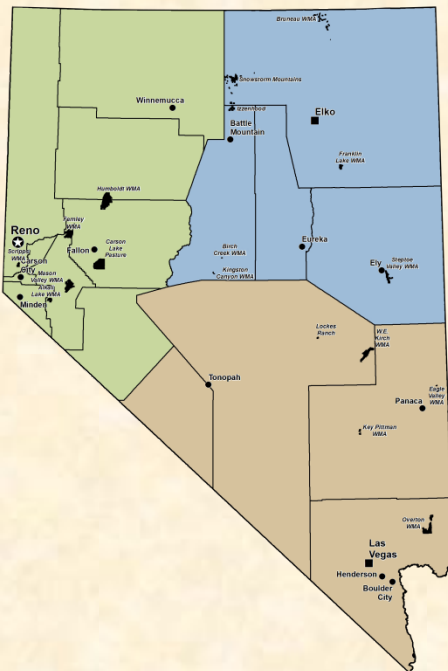
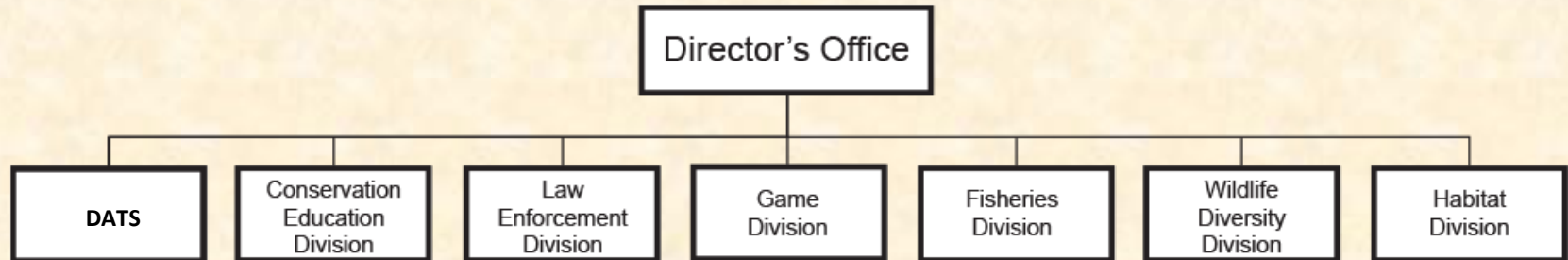




DEPARTMENT OF WILDLIFE

2021 Capital Improvement Projects
Agency Request

DEPARTMENT OF WILDLIFE



- 262 Full-time Employees
- 133 Buildings
- 13 Radio Towers
- 11 Wildlife Management Areas (120,000 ac.)
- 8 Major Facilities
- 7 Unique Divisions
- 4 Fish Hatcheries
- 3 Regions



DEPARTMENT OF WILDLIFE



PRIORITIZED PROJECT OVERVIEW

1) **Project #21050 – Las Vegas Office Roof Replacement**

Southern Region HQ – Las Vegas

2) **Project #19300a – Construct Water Wells and Water Systems at Hatchery Operations**

Gallagher Hatchery – Ruby Valley and Spring Creek Rearing Station - Baker

3) **Project #21064 – Cave Creek Dam Rehabilitation**

Cave Lake State Park - Ely

4) **Project #21248 – Gallagher Fish Hatchery - Hatchery Building Water Intrusion Repairs**

Gallagher Fish Hatchery - Hatchery Building – Ruby Valley

5) **Project #19260c – Elko Office HVAC System Renovation**

Eastern Region HQ – Elko

6) **Project #7606 – Mason Valley WMA Office and Heavy Equipment Storage**

Mason Valley Wildlife Management Area - Yerington

DEPARTMENT OF WILDLIFE



PRIORITIZED PROJECT OVERVIEW

Continued

7) Project #21051 – Elko Office Shop/Warehouse HVAC System Installation

Eastern Region HQ - Elko

8) Project #7607 – Ely Office Upgrades and Addition

Eastern Region - Ely

9) Project #7631 – Ely Office Storage Building and Carport

Eastern Region - Ely

10) Project #7668 – Overton WMA Covered Storage Buildings

Overton Wildlife Management Area - Overton

10) Project #21052 – Steptoe Valley WMA Building Demolition

Steptoe Valley Wildlife Management Area - Ely

Statewide Roofing
Las Vegas Office – Southern Region HQ Roof Replacement
Project # 21050
Key NDOW Facility



Las Vegas Office Roof Replacement Las Vegas, Nevada



- Majority of roofing is blistered and cracked.
- Roof has been patched multiple times in the past and within the past year.
- New HVAC units recently installed on roof top exacerbated damage to roof.
- Excessive leaks observed throughout office during storm events.
- Roof has exceeded useful life.

Nevada Department of Wildlife
Construct Water Wells and Water Systems
Project # 19300a – Hatchery Sites
Gallagher Hatchery and Spring Creek Rearing Station



Gallagher Hatchery Domestic Water System

Ruby Valley, Elko County, Nevada



Spring box system serves residences and hatchery operations. Last water system improvements constructed in 1982.

Issues include:

- No backflow protection between
 - industrial supply to domestic supply
 - culinary and irrigation
- Not secure – critter intrusion
- Not sanitary
- Not safe
- Unreliable treatment
- Non-operable fire suppression

Spring Creek Rearing Station Domestic Water System

Baker, White Pine County, Nevada



Domestic well and pump house

Water well constructed to a depth of 32' in 1955.
Well casing has collapsed and pump is currently set at 14'.
Leach fields within 200' of well.

Issues:

- Not constructed to code.
- No backflow prevention.
- Not sanitary.
- Not secure.
- Exceeded useful life.
- Failure is eminent.
- Young children living on site.



Septic leach field site with pump house visible in background

Nevada Department of Wildlife Cave Creek Dam Rehabilitation Project # 21064

Cave Lake State Park
White Pine County, Nevada



Cave Creek Dam Rehabilitation

Cave Lake State Park
White Pine County, Nevada

Family Destination

- Fishing
- Boating
- Swimming
- Camping
- Sightseeing
- Hiking
- Biking
- Festivals
- Fund Raisers



Community Impact

- Scholarships
- Boating
- Camping
- Sightseeing
- Hiking
- Festivals
- Fund Raisers



Annual Ice Fishing Derby



Fire and Ice Festival
Ice Sculpture

Cave Creek Dam Rehabilitation

Cave Lake State Park

White Pine County, Nevada



ELY ROTARY CLUB

No. 2016
P.O. Box 151827, ELY, NEVADA 89315

August 17, 2020

The Ely Rotary Club has hosted an Ice Fishing Derby at Cave Lake State Park for over 20 years and that event is our main source of revenue. This revenue is essential to our contributions to community projects as well as our scholarship program. During the last 10 years we have averaged approximately \$25,000.00 per year in scholarships to graduating seniors from White Pine High School and Lund High School. We encourage students interested in trade schools as well as those planning to attend a college or university. We have used some of our revenue to provide tools needed for those attending a trade or vocational school.

In addition to funding the scholarships to local students the Fishing Derby provides a much needed economic boost to Ely. Approximately 85% of the participants are from out of the area and the hotels and motels, as well as local restaurants, benefit from the influx of people. The Derby is held in January and that is typically a very slow time for our local hospitality businesses. Without the Fishing Derby the local economy struggles in the winter.

Because Cave Lake was drained and the water level was too low to hold the Fishing Derby in January of 2020, we were only able to award \$5000.00 in scholarships this year. It is extremely important to Ely Rotary Club as well as this entire community that Cave Lake be reopened.

Thank you for your time and consideration.

Sincerely,

A handwritten signature in dark ink, appearing to read "Dale Derbidge".

Dale Derbidge, Secretary Ely Rotary Club



WHITE PINE COUNTY TOURISM AND RECREATION BOARD

Bristlecone Convention Center & Visitors Bureau

Rodd Lighthouse, Supervising Professional Engineer
Nevada Department of Wildlife
6980 Sierra Center Parkway
Reno, Nevada 89511

Mr. Lighthouse,

My name is Kyle Horvath. I am the Director of Tourism for White Pine County. White Pine County's quality of life assets favor those locals and visitors who enjoy the outdoors. Recently the city of Ely and the county both adopted a CEDS document naming Outdoor Recreation as the number one focus for long term economic growth and stability. On a non COVID year, tourism was trending up and can account for over 350,000 overnight visitors, not including those who stay at State and National Parks, and has an economic impact of \$40 Million of new money coming into the community.

Cave Lake State Park plays a major role in our identity as a recreation destination and our economic prosperity. Not only is the park a destination for its beauty, but it truly is our flagship destination for recreation. Cave Lake State Park offers excellent fishing, kayaking, paddle boarding, swimming, hiking, mountain biking, and OHV opportunities. The park is also home to established events that are well known throughout the state, like Fire and Ice Winter Festival, Take It To The Lake Half Marathon, and the Rotary Ice Fishing Derby. Cave Lake State Park also has the potential to incubate many other events that have not been tried yet. Event's like Fire and Ice and the Rotary Ice Fishing Derby are offer an essential tourism boost during the lean winter months and can account for thousands of visitors and hundreds of thousands of dollars in revenue.

Since the start of the dam repair project, all 3 established events at the state park named above have been cancelled and attendance at the state park is down. Not surprisingly we have seen the recreationist who would have been utilizing Cave Lake now packing the shores of Comins Lake. With an increase in tourism and imminent population growth, it is imperative to have both lakes open to disperse the user groups to a sustainable level.

Every year that Cave Lake is compromised due to the dam repairs the surrounding community loses hundreds of thousands of dollars. My board, lodging properties, and local businesses all appreciate the state prioritizing the repair of the Cave Lake State Park Dam and restoring the lake level to its former levels. If there is any other information you need to help with this process, do not hesitate to ask.

Sincerely,

A handwritten signature in dark ink, appearing to read "Kyle Horvath".

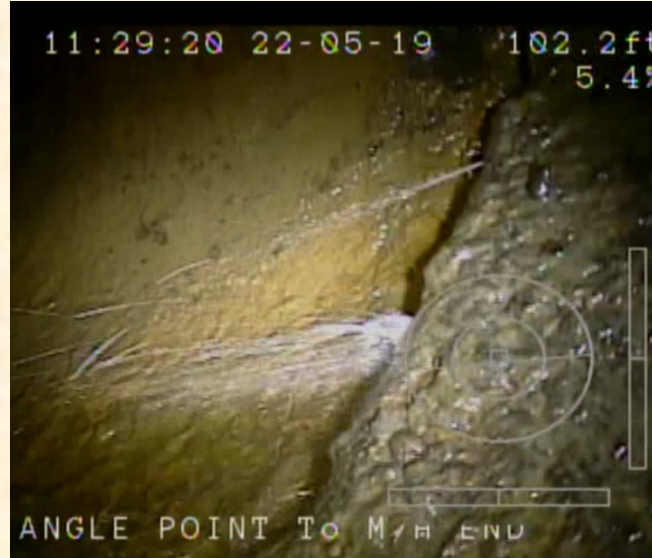
Kyle Horvath

150 6th Street • Ely, Nevada 89301
775 289-3720 • 800 496-9350 • Fax 775 289-6757

Economically, Cave Lake is very important to the well being of the City of Ely and its residents.

Cave Creek Dam Rehabilitation

Cave Lake State Park
White Pine County, Nevada



Dam/Reservoir Concerns

- High Hazard Dam
- Compromised low-level outlet
- Internal dam piping
- Unstable dam embankment
- Undersized spillway
- Overtopping during PMP event
- Unstable shoreline – -12' water



Necessary Dam Repairs

- Low-level outlet mitigation
 - New (bore through outcrop)
 - Slip line existing outlet
- Raise dam height
- Construct filter drain
- Buttress dam
- Enlarge spillway

Gallagher Fish Hatchery
Hatchery Building Water Intrusion Repairs
Project #21248
Ruby Valley, Elko County, Nevada



Hatchery Building Water Intrusion Repairs

Ruby Valley, Elko County, Nevada



Nevada Department of Wildlife HVAC Systems Renovation Project # 19260c – Elko Office



Elko Office Boiler Room



- According to SPWD facility condition analysis (FCA) report dated January 2018, boiler replacement is needed. Units are original to building (2002) and parts are difficult to find.
- System is old technology and inefficient.
- Original control system is no longer supported and system has been band-aided together to get by.
- Frequent maintenance calls and significant amount of money spent on maintaining the past couple of years.
 - Control issues
 - Low water shut off valve
 - Fan coils leaking
 - Fan coil blower bearing replaced
 - Belimo valve replaced
 - Fans coils bursting
 - Non communicating alarms
 - Compressors are currently failing
 - Code compliance issues

Project will ensure compliance with Senate Bill 254, an act relating to greenhouse gas emissions; requiring the State Department of Conservation and Natural Resources to issue an annual report concerning greenhouse gas emissions in this State; and providing other matters properly relating thereto, such as reducing greenhouse gasses from burning of fossil fuels for electricity and heat in buildings.

**Nevada Department of Wildlife
Mason Valley Wildlife Management Area
Office and Heavy Equipment Storage
Project # 7606**

Yerington, Lyon County, Nevada



Mason Valley WMA

Office and Heavy Equipment Storage

Yerington, Lyon County, Nevada



Issues

Roofing
Ceiling
Flooring
HVAC
Plumbing
Electrical
Flooding
Windows
Doors
Accessibility



Ramifications if projects not approved:

1) Las Vegas Office Roof

- Costly water damage repairs
- Mold
- Worker health and safety issues

2) Wells and Water Systems at Hatchery Operations

- Untreated and unsafe drinking water
- Worker health and safety issues
- Potential lawsuits
- Inadequate fire fighting capabilities
- Costly and ineffective maintenance

3) Cave Creek Dam Rehabilitation

- Dam failure
- Potential loss of life
- Loss of popular family recreation destination
- Economic losses to Ely and its residents

4) Gallagher Fish Hatchery Water Intrusion Repairs

- Continued building degradation
- Structural building failure
- Building condemnation
- Moisture intrusion
- Pest intrusion
- Worker health and safety issues

5) Elko HVAC System Renovation

- Poor air quality
- Potential health issues
- Unsupported products
- Unavailable materials
- Costly and ineffective maintenance
- Potential lawsuits

6) Mason Valley WMA Office and Heavy Equipment Storage Building

- Costly repairs on worthless building
 - Roofing
 - Flooring
 - Ceiling
 - HVAC
 - Paint
 - Siding
 - Windows
 - Doors
- All utilities beyond useful life
- Flooding
- Worker health and safety issues
- Mold
- Not ADA accessible

DEPARTMENT OF WILDLIFE

2021 Capital Improvement Projects Agency Request

**THANK YOU
FOR YOUR
CONSIDERATION**

